

# ACO ACCESS

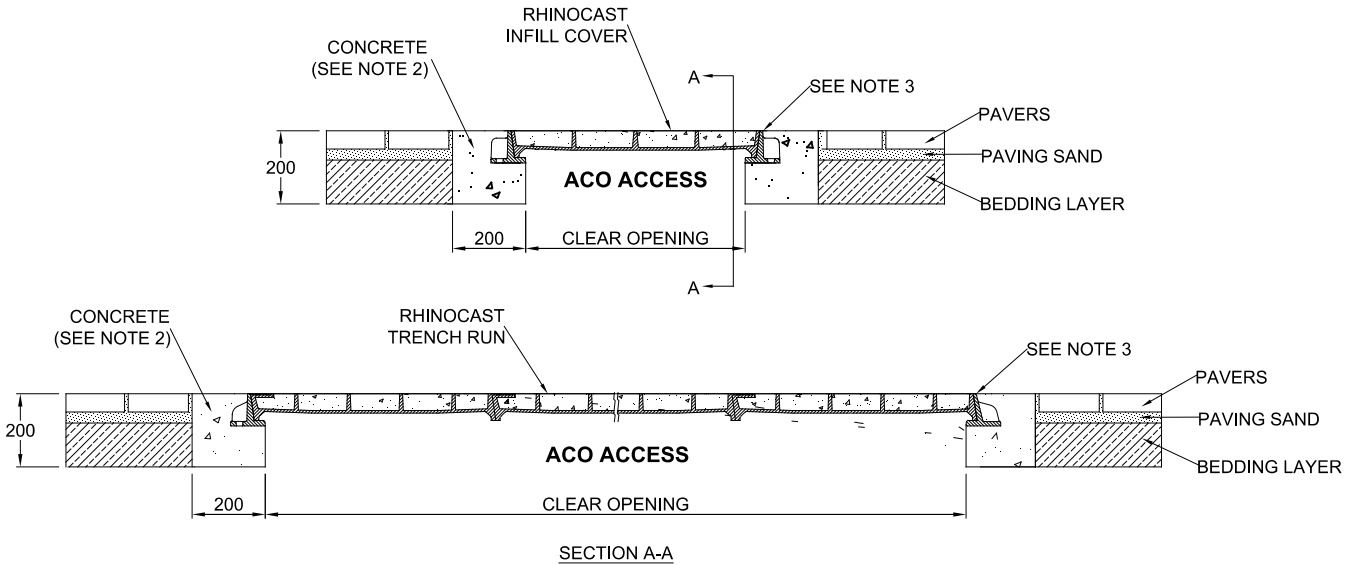
# INSTALLATION DRAWING



DRWG# XATR-DP2  
www.acoaus.com.au

## Rhinocast Trench Run Infill Covers

Class D240: Pavers 2



**NOTES:**

1. Specific site conditions may require an increase in these dimensions or reinforcement. It is the customer's responsibility to ensure the concrete encasement is designed for the application. *Engineering advice may be required.*
2. A minimum concrete strength of 32MPa is recommended. The concrete should be vibrated to eliminate air pockets.
3. The finished level of the concrete surround must be flush with the top of the frame.
4. Refer to ACO's latest installation instructions for complete details.

# ACO ACCESS

# SPECIFICATION CLAUSE

ACO Pty Ltd  
134-140 Old Bathurst Road  
Emu Plains NSW 2750  
Tel: 1300 756 226  
Tel: +61 2 4747 4000  
e: technical@acoaus.com.au

DRWG# XATR-DP2  
www.acoaus.com.au

## Rhinocast Trench Run Infill Covers

Trench run access covers & frames are to be ACO Access Rhinocast Infill manufactured from ductile iron with minimum tensile strength of 600MPa and minimum elongation of 10% to conform to AS 3996. The cover systems shall satisfy AS 3996 Load Class D 240kN.

Standard Locking bolts (SL) / security rated Security Bolts (SB)\* shall be used to secure the Cover\*\*  
Concrete infill covers to be filled in accordance with AS 3996\*\*

- \* Please delete where appropriate.
- \*\* Option