

# ACO ACCESS

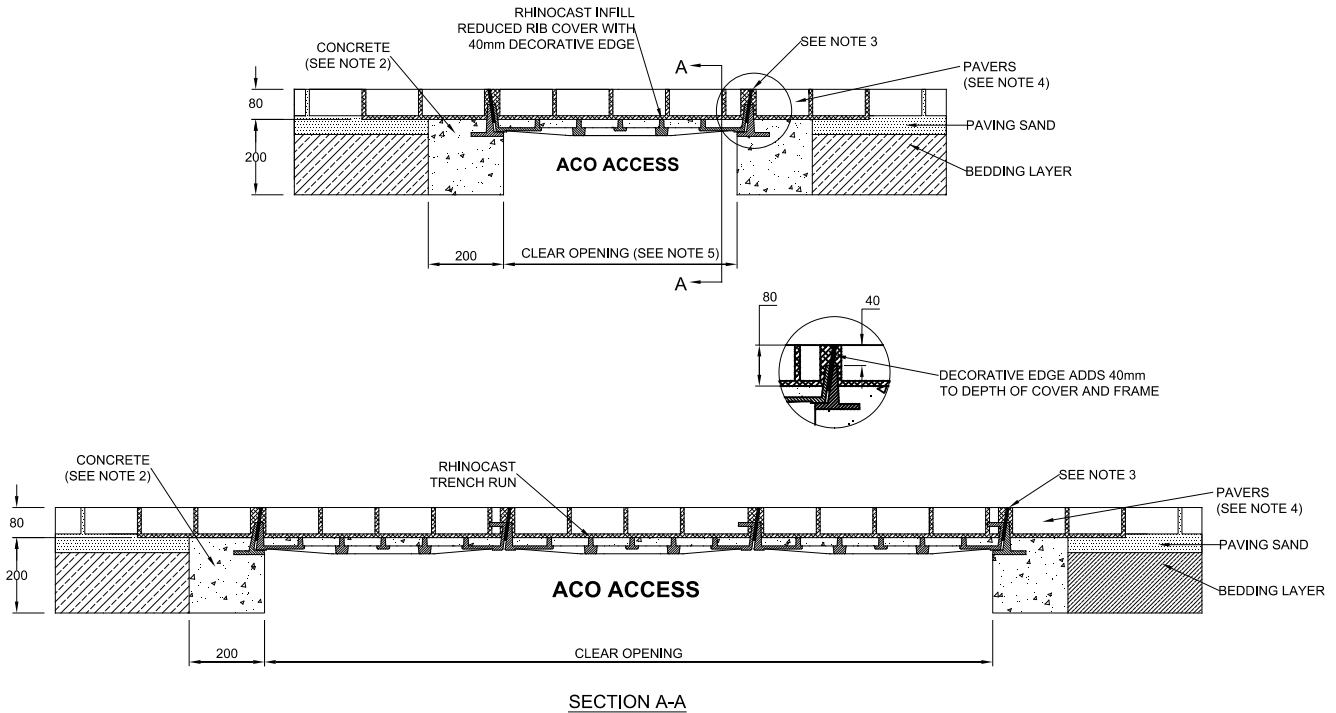
# INSTALLATION DRAWING



DRWG# XATR-CP40  
www.acoaus.com.au

## Rhinocast Trench Run Infill Reduced Rib Cover

### Class C: Pavers 1 with 40mm Decorative Edge



**NOTES:**

1. Specific site conditions may require an increase in these dimensions or reinforcement. It is the customer's responsibility to ensure the concrete encasement is designed for the application. *Engineering advice may be required.*
2. A minimum concrete strength of 32MPa is recommended. The concrete should be vibrated to eliminate air pockets.
3. The finished level of the pavers must be flush with the top of the decorative edge.
4. The paver course adjacent to the decorative edge must be fully bonded to the concrete surround.
5. Decorative edged covers will add 12mm to the clear opening of a standard cover, for each additional cover add 66mm to the length. For example, 3-part covers using 600x600mm standard cover with a decorative edge will have a clear opening of 612x1944mm.
6. Refer to ACO's latest installation instructions for complete details.

# ACO ACCESS

# SPECIFICATION CLAUSE

ACO Pty Ltd  
134-140 Old Bathurst Road  
Emu Plains NSW 2750  
Tel: 1300 765 226  
Tel: +61 2 4747 4000  
e: technical@acoaus.com.au

DRWG# XATR-CP40  
www.acoaus.com.au

## Rhinocast Trench Run Infill Reduced Rib Cover

### With 40mm Decorative Edge

Trench run access covers & frames are to be ACO Access Rhinocast Infill Reduced Rib manufactured from ductile iron with minimum tensile strength of 600MPa and minimum elongation of 10% to conform to AS 3996. The cover systems shall satisfy AS 3996 Load Class C.

A 40mm decorative brass / stainless steel\* edge is fixed to the cover  
Standard Locking bolts (SL) / security rated Security Bolts (SB)\* shall be used to secure the Cover\*\*  
Paver / concrete infill covers to be filled in accordance with AS 3996\*\*

\* Please delete where appropriate.

\*\* Option