
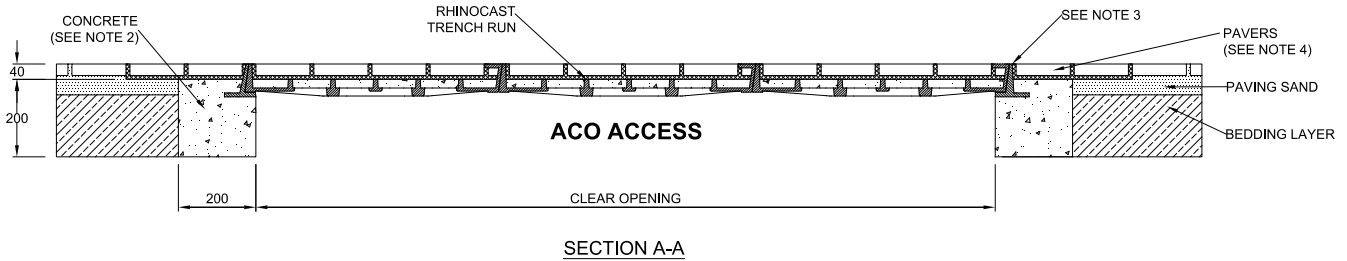
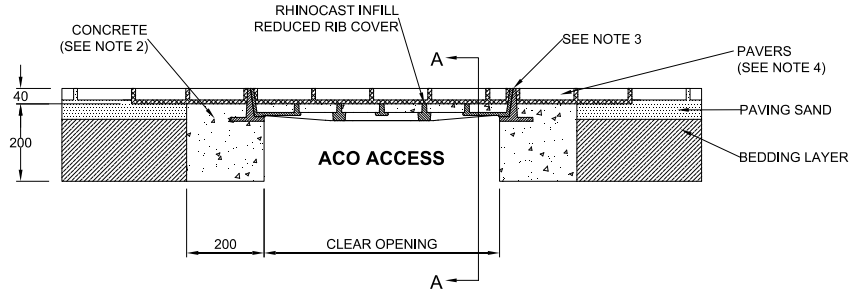


ACO ACCESS	INSTALLATION DRAWING	
DRWG# XATR-CP	Rhinocast Trench Run Infill Reduced Rib Cover	
www.acoaus.com.au	Class C: Pavers 1	



NOTES:

1. Specific site conditions may require an increase in these dimensions or reinforcement. It is the customer's responsibility to ensure the concrete encasement is designed for the application. *Engineering advice may be required.*
2. A minimum concrete strength of 32MPa is recommended. The concrete should be vibrated to eliminate air pockets.
3. The finished level of the pavers must be flush with the top of the frame.
4. The paver course adjacent to the frame must be fully bonded to the concrete surround.
5. Refer to ACO's latest installation instructions for complete details.

ACO ACCESS	SPECIFICATION CLAUSE	ACO Pty Ltd 134-140 Old Bathurst Road Emu Plains NSW 2750 Tel: 1300 765 226 Tel: +61 2 4747 4000 e: technical@acoaus.com.au
DRWG# XATR-CP	Rhinocast Trench Run Infill Reduced Rib Cover	
www.acoaus.com.au		

Trench run access covers & frames are to be ACO Access Rhinocast Infill Reduced Rib manufactured from ductile iron with minimum tensile strength of 600MPa and minimum elongation of 10% to conform to AS 3996. The cover systems shall satisfy AS 3996 Load Class C.

Standard Locking bolts (SL) / security rated Security Bolts (SB)* shall be used to secure the Cover**
Paver / concrete infill covers to be filled in accordance with AS 3996**

- * Please delete where appropriate.
- ** Option