



Portfolio

PF201316

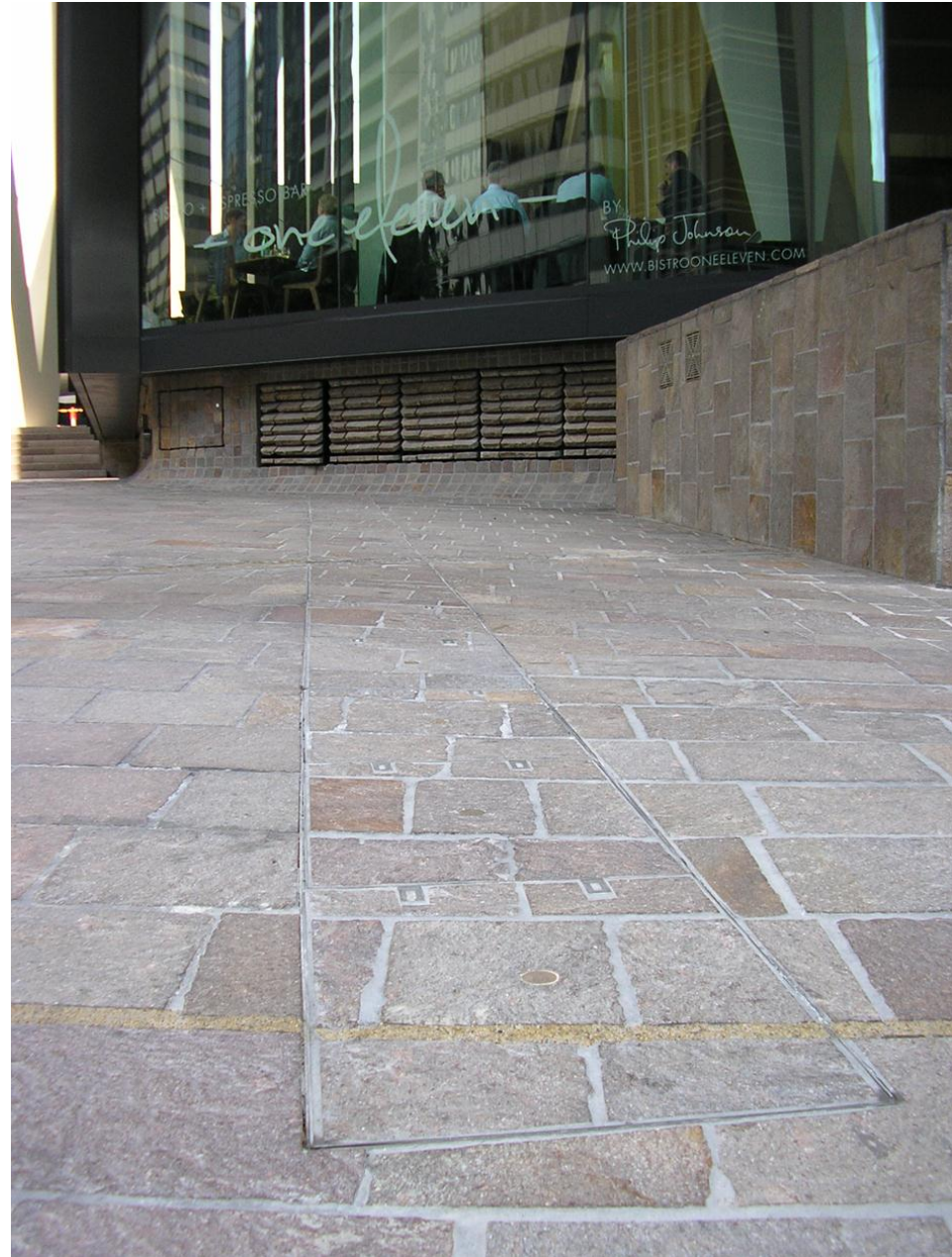
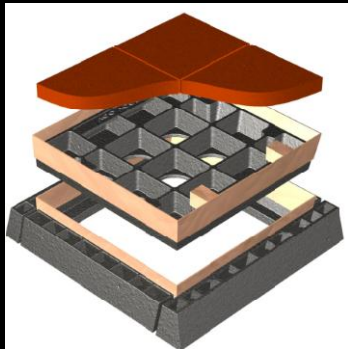
Bistro ONE Eleven

ONE ONE ONE Eagle Street is Brisbane's tallest office tower located in the Golden Triangle financial district overlooking the Brisbane River.

The tower features a new lobby eatery run by one of Queensland's most renowned chefs, Philip Johnson, owner of E'cco Bistro on nearby Boundary St.

Designers selected ACO's Rhinocast® ductile iron access covers with discrete stainless steel edging. For this application, the access cover system was arranged as a trench run but was easily disguised. The pavement materials were fixed into each recessed cover thereby allowing visual continuity over the underlying service trench.

For more product info visit
www.acoaus.com.au/access



Product Details

Specifier:
Product featured:
Other ACO products used in this project:

Cox Rayner Architects
Rhinocast® trench run access covers